



**ARCHITECTURAL ADDENDUM  
ADD #1**

Submitted to: Hilliard Township  
Via e-mail: twphill@parolink.net

December 7, 2022

Attention: **Vaughn Finch, Clerk**

Re: **Hilliard Township Office Addition  
951678 Hwy 569  
Hilliardton, ON P0J 1P0**

Project No. **22013**

THIS ADDENDUM SHALL FORM PART OF THE CONTRACT DOCUMENTS, AND ALL CHANGES AND COST SHALL BE INCLUDED IN THE BID AMOUNT.

**ITEM #1**

Reference: Specifications on Drawing A1 (Drawing not re-issued)  
Additional information

SLAB TYPE 'SL1'  
- VINYL COMPOSITE TILE FINISH INSTALLED AS PER MANUF. SPECS.

for bidding purposes, this material shall be: 12x24" VCT  
with the cash allowance of: \$1.98 / sq. ft

and shall be installed on a: UNCOUPLING MEMBRANE  
with the cash allowance of: \$1,600.00

**ITEM #2**

Reference: Specifications on Drawing A1 (Drawing not re-issued)  
Additional information

WALL TYPE 'W1x'  
- PRIME & PAINT INT. FINISH

for bidding purposes, the primer shall be: TWO (2) COATS, INTERIOR ACRYLIC LATEX PRIMER

and the paint shall be:

- BENJAMIN MOORE (FIRST LINE QUALITY) OR APPROVED ALTERNATE
- TWO (2) COATS, INTERIOR 100% ACRYLIC LATEX
- EGG SHELL FINISH

**ITEM #3**

Reference: Specifications on Drawing A1 (Drawing not re-issued)  
Additional information

WALL TYPE 'W1x'  
- HORIZONTAL SIDING EXT. FINISH

Replace with:

WALL TYPE 'W1x'  
- VERTICAL METAL CLADDING EXT. FINISH

for bidding purposes, this material shall be: - IDEAL ROOFING, COLONIAL PROFILE, 35.5" PANELS,  
COLOUR TO BE SELECTED BY OWNER

**ITEM #4**

Reference: Specifications on Drawing A1 (Drawing not re-issued)  
Additional information

WALL TYPE 'W1x'  
NOTE 2. INSTALL VINYL/RUBBER WALL BASE AS PER MANUF. SPECS.

for bidding purposes, this material shall be: ROPPE 700 SERIES, WHITE, 4'x1/8"

**ITEM #5**

Reference: Specifications on Drawing A1 (Drawing not re-issued)  
Additional information

FINISH TYPE 'FN1x'  
- PRIME & PAINT INT. FINISH

for bidding purposes, the primer shall be: TWO (2) COATS, INTERIOR ACRYLIC LATEX PRIMER

and the paint shall be: - BENJAMIN MOORE (FIRST LINE QUALITY) OR APPROVED ALTERNATE  
- TWO (2) COATS, INTERIOR 100% ACRYLIC LATEX  
- EGG SHELL FINISH

**ITEM #6**

Reference: Specifications on Drawing A1 (Drawing not re-issued)  
Additional information

PARTITION TYPE 'P1' and PARTITION TYPE 'P2'  
- 1/2" DRYWALL<sup>1</sup>

Replace with:

- 1/2" DRYWALL<sup>1</sup> PRIMED & PAINTED INT. FINISH

for bidding purposes, the primer shall be: TWO (2) COATS, INTERIOR ACRYLIC LATEX PRIMER

and the paint shall be:  
- BENJAMIN MOORE (FIRST LINE QUALITY) OR APPROVED ALTERNATE  
- TWO (2) COATS, INTERIOR 100% ACRYLIC LATEX  
- EGG SHELL FINISH

**ITEM #7**

Reference: Specifications on Drawing A1 (Drawing not re-issued)  
Additional information

ROOF TYPE 'R1'  
- METAL CLADDING ROOF FINISH

for bidding purposes, this material shall be: - IDEAL ROOFING, AMERI-CANA PROFILE, 41" PANELS, INCLUDING FITTED RIDGE CAP, AMERI-CANA AND VENTED CLOSURE STRIP RIDGE, AMERI-CANA

**ITEM #8**

Reference: Specifications on Drawing A1 (Drawing not re-issued)  
Additional information

ROOF TYPE 'R1'  
- 5/8" DRYWALL FINISH [40 min]<sup>1</sup>

Replace with:

- 5/8" DRYWALL FINISH [40 min]<sup>1</sup> PRIMED & PAINTED INT. FINISH

for bidding purposes, the primer shall be: TWO (2) COATS, INTERIOR ACRYLIC LATEX PRIMER

and the paint shall be:  
- BENJAMIN MOORE (FIRST LINE QUALITY) OR APPROVED ALTERNATE  
- TWO (2) COATS, INTERIOR 100% ACRYLIC LATEX  
- EGG SHELL FINISH

**ITEM #9**

---

Reference: Specifications on Drawing A11 (Drawing not re-issued)  
Additional information

DOOR TYPES 'WD-1' and 'WD-2'  
DOOR HEIGHT = 84"

Replace with:

DOOR TYPES 'WD-1' and 'WD-2'  
DOOR HEIGHT = 80"

for bidding purposes, the interior doors shall be: SOLID CORE, PRIMED, FLUSH STYLE DOOR  
with the cash allowance of: \$485.00 /unit (HARDWARE NOT INCLUDED IN CASH ALLOWANCE)

and the paint shall be:

- BENJAMIN MOORE (FIRST LINE QUALITY) OR APPROVED ALTERNATE
- TWO (2) COATS, INTERIOR 100% ACRYLIC LATEX
- EGG SHELL FINISH

**ITEM #10**

---

Reference: Specifications on Drawing A11 (Drawing not re-issued)  
Additional information

DOOR TYPE 'ACD-1'

for bidding purposes, this exterior door shall be: COMMERCIAL GRADE, INSULATED ALUMINUM, ANODIZED COLOURED FINISH (COLOUR TO BE DETERMINED) WITH 1/3 VISION LITE. SUPPLY AND INSTALL IN ACCORDANCE WITH SB-10 ENERGY EFFICIENCY REQUIREMENTS (MAX. FENESTRATION ASSEMBLY U-VALUE OF 0.69).

**ITEM #11**

---

Reference: Specifications on Drawing A11 (Drawing not re-issued)  
Additional information

WINDOWS 'W1'

for bidding purposes, windows shall be: WHITE PVC FRAME AND SASH, LOW-E, ARGON FILLED, DOUBLE PANE INSULATING GLASS. SUPPLY AND INSTALL IN ACCORDANCE WITH SB-10 ENERGY EFFICIENCY REQUIREMENTS (MAX. FENESTRATION ASSEMBLY U-VALUE OF 0.29).

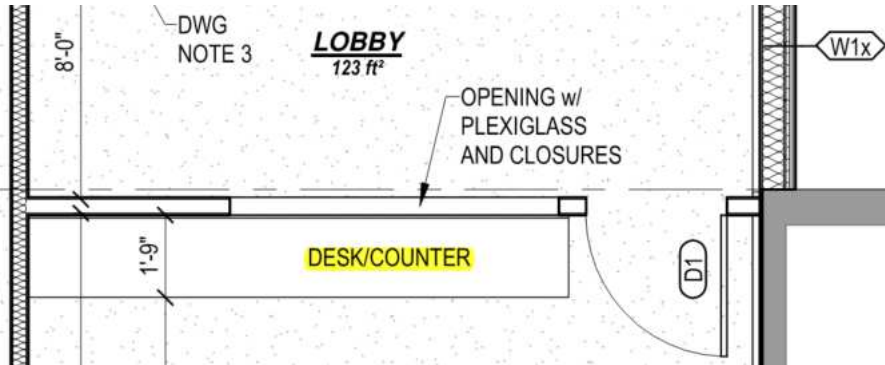
**ITEM #12**

---

Reference: Specifications on Drawing A6 (Drawing not re-issued)

Additional information

DESK/COUNTER highlighted below



shall measure 11'-6" long and incorporate base cabinets.

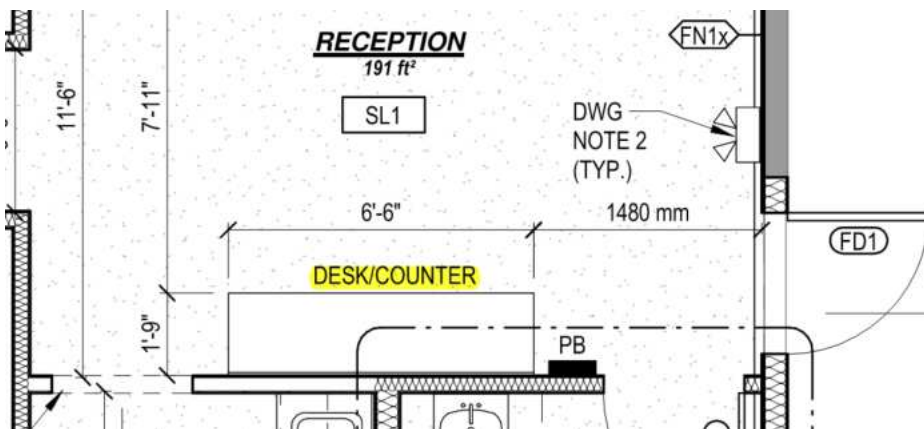
for bidding purposes, the counter top shall be: LAMINATE  
with the cash allowance of: 25.00 \$/lin. ft

and the base cabinets shall be: WHITE MELAMINE  
with the cash allowance of: 275.00 \$/lin. ft

**ITEM #13**

Reference: Specifications on Drawing A6 (Drawing not re-issued)  
Additional information

DESK/COUNTER highlighted below



shall incorporate base cabinets.

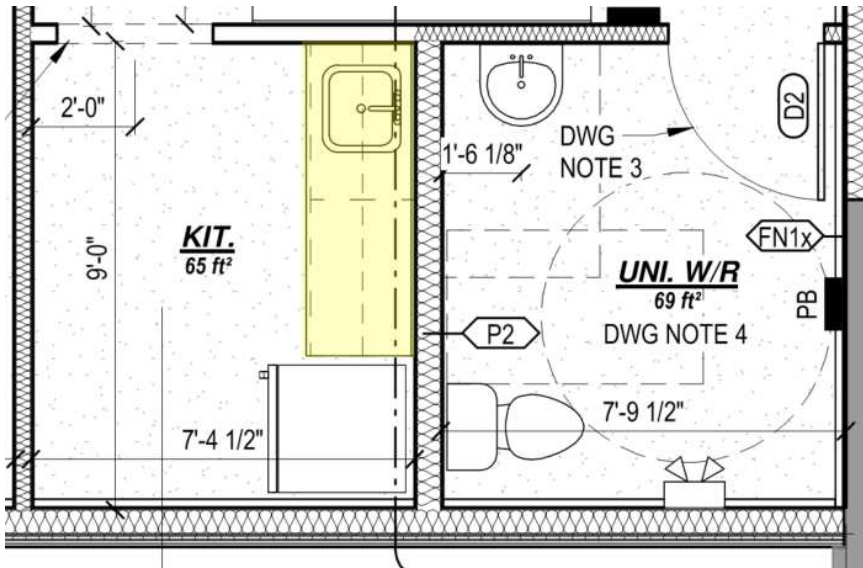
for bidding purposes, the counter top shall be: LAMINATE  
with the cash allowance of: 25.00 \$/lin. ft

and the base cabinets shall be: WHITE MELAMINE  
with the cash allowance of: 275.00 \$/lin. ft

**ITEM #14**

Reference: Specifications on Drawing A6 (Drawing not re-issued)  
Additional information

KITCHENETTE highlighted below



shall measure 6'-0" long and incorporate base cabinets.

for bidding purposes, the counter top shall be: LAMINATE  
with the cash allowance of: 25.00 \$/lin. ft

and the base cabinets shall be: WHITE MELAMINE  
with the cash allowance of: 275.00 \$/lin. ft

**INSTRUCTIONS TO BIDDERS**

Cash allowances provided are for the supply of materials only and are for bidding purposes only. Fluctuations in material prices may affect the final purchase price and will be subject to review. Installation is to be included in the quote. Alternate products shall be submitted with the bid for review. Cash allowance items are to be listed separately in the summary of your bid amount as follows.

Base bid amount:

- Cash allowance VCT supply:
- Cash allowance uncoupling membrane supply:
- Cash allowance doors supply:
- Cash allowance counter tops supply:
- Cash allowance base cabinets supply:

Total Bid amount: